



*Manufacturers of Process
Controls and Instrumentation*

Instruction Manual

Model: *IUC-7X-WTY*

Function: *Isolated Watts Transducer*

Input: Y=1: Single Element
 Y=2: Dual Element

Calibration: Full Scale Watts: _____ kW
P.T.: ____ / ____ C.T.: ____ : ____

Output: X=1: 1-5 mA X=4: 10-50 mA
 X=2: 4-20 mA X=5: 1-5 VDC
 X=3: 0-1 mA X=6: 0-10 VDC
 X=7: _____

Power: 117 VAC, 60 Hz, 6 VA
 240 VAC, 60 Hz, 6 VA
 24 VDC, 160 mA

Serial #: _____
(If special or required)

For Technical Assistance And Questions Call
USA: (734) 677-0459 CANADA: (905) 660-5336

Restocking Policy

All product returned to Pribusin Inc. in prime condition (not damaged, scratched or defaced in any way) within seven (7) months from the original date of shipment is subject to a 50% restocking charge. All product must be accompanied by a Return Authorization number (RA number) which must be obtained from Pribusin Inc. prior to returning any product.

After seven (7) months from the original date of shipment, products cannot be returned for restocking.

Custom designed products, modified products or all non-standard products may not be returned for restocking.

Warranty Policy

Pribusin Inc. warrants equipment of its own manufacture to be free from defects in material and workmanship, under normal conditions of use and service, and will replace any component found to be defective, on its return to Pribusin Inc., transportation charges prepaid, within one year of its original purchase. Pribusin Inc. will extend the same warranty protection on equipment, peripherals and accessories which is extended to Pribusin Inc. by the original manufacturer. Pribusin Inc. also assumes noliability, expressed or implied, beyond its obligation to prelace any component involved. Such warranty is in lieu of all other warranties, expressed or implied.



Standard Features:

- New Selectable Output for Watt, VA, VAR or Power Factor
- High Input-Output-Power Isolation (1500VAC Test)
- Single or Double Element for 1 and 3 Phase Circuits
- Industry Standard Output: 4-20 mA, 1-5 VDC, more
- New Optional Watt Hour Counter & Watt Display
- New Microprocessor Controlled for High Accuracy even with Distorted Waveforms (SCR switching etc.)
- Less than 1VA Burden on Voltage and Current Coils
- 0-5 AAC Current, 0-150 VAC Voltage Input
- Standard Calibrations: 500 Watts (WT1), 1000 Watts (WT2)
- New Easy Field Adjustable Output Calibration
- Power: 117 VAC 50/60 Hz
- High Noise Rejection
- CSA and NRTL Approved (LR 51078)

Function:

The IUC-7X-WTX is a new & improved model of its prior version. It uses a microprocessor to compute instantaneous voltage and current values which it then uses to produce one of four different outputs. These are: 1) Watt, 2) VA, 3) VAR and 4) Power Factor.

An optional Watt Hour counter output is also available to count watt hours consumed. The IUC-7X-WTX comes in single (-WT1) or double (-WT2) element versions for 1, 2 or 3 phase systems.

$$\text{Watts} = V_{\text{Instantaneous}} \times I_{\text{Instantaneous}}$$

$$\text{VA} = V_{\text{RMS}} \times I_{\text{RMS}}$$

$$\text{VAR} = \sqrt{\text{VA}^2 - \text{Watt}^2}$$

$$\text{Power Factor} = \frac{\text{Watts}}{\text{VA}}$$

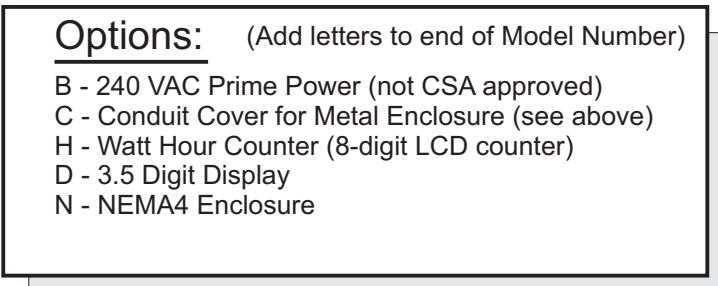
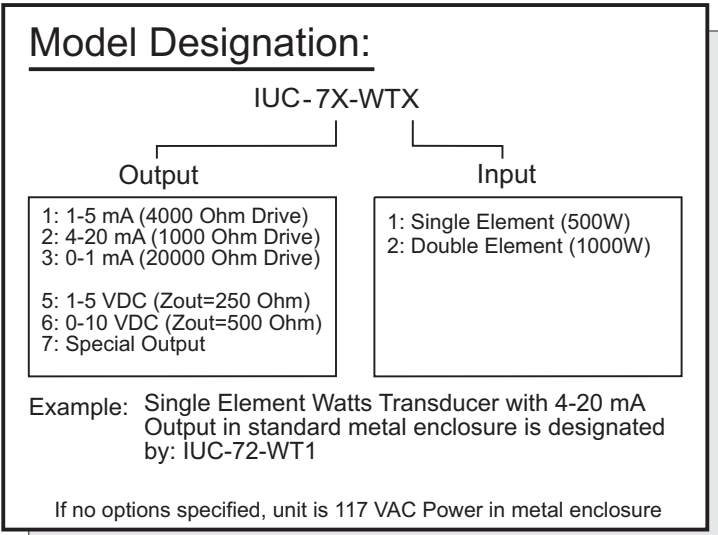
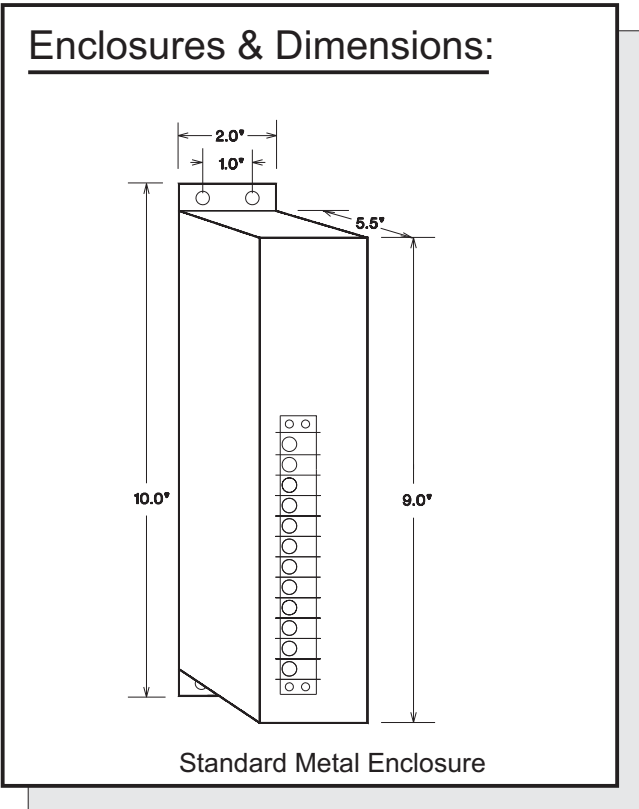
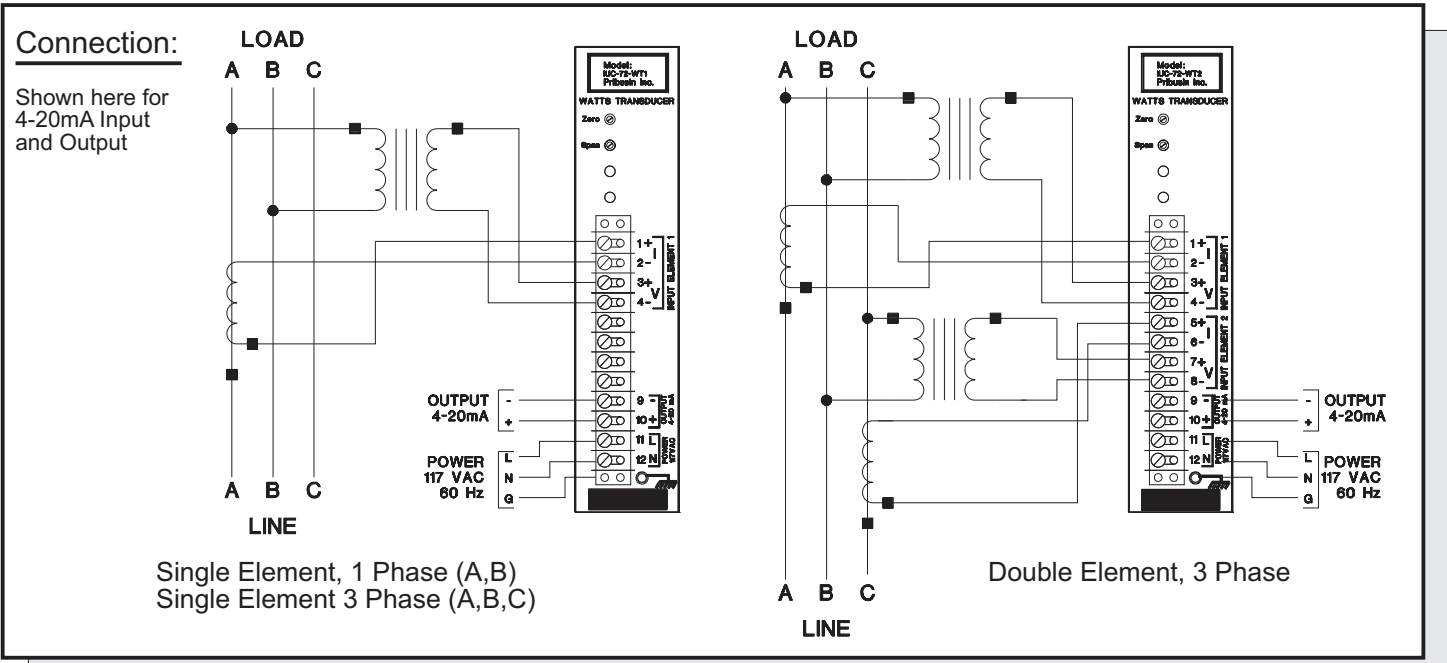
Calibration:

No calibration is required on these watts transducers. There is a zero and span adjustment for the output signal for output calibration. Standard calibrations are for 500 Watts (WT1) and 1000 Watts (WT2).

Specifications:

Isolation: Input to Output to Power 1500 VAC (test)
 Maximum Coil Ratings: Current: 15A Continuous
 100A 3 sec/Hr.
 Voltage: 150% of Rated Voltage
 Accuracy/Linearity: +/- 0.4% max., +/- 0.2% typ.
 Operating Temperature: -40 Deg.C. to +50 Deg.C.
 Temperature Effects: +/-0.5% max., +/-0.2% typ.
 (for 40 Deg.C. change)

IUC-7X-WTX



Manufactured By:

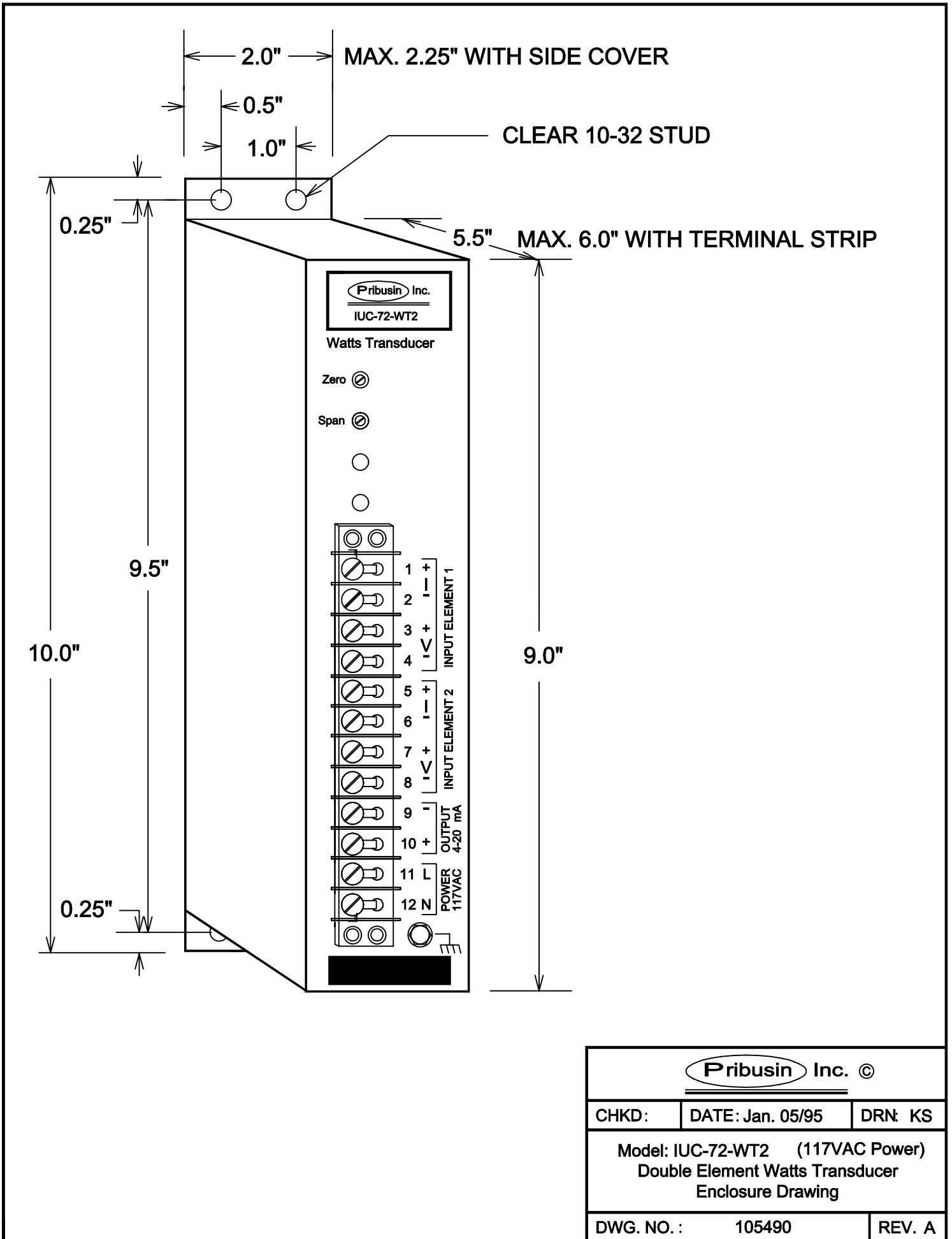


www.pribusin.com
info@pribusin.com

USA:
Pribusin Inc.
743 Marquette Ave.
Muskegon, MI 49442
Ph: (231) 788-2900
Fx: (231) 788-2929



CANADA:
Pribusin Inc.
101 Freshway Dr. Unit 57
Concord, Ontario, L4K 1R9
Ph: (905) 660-5336
Fx: (905) 660-4068



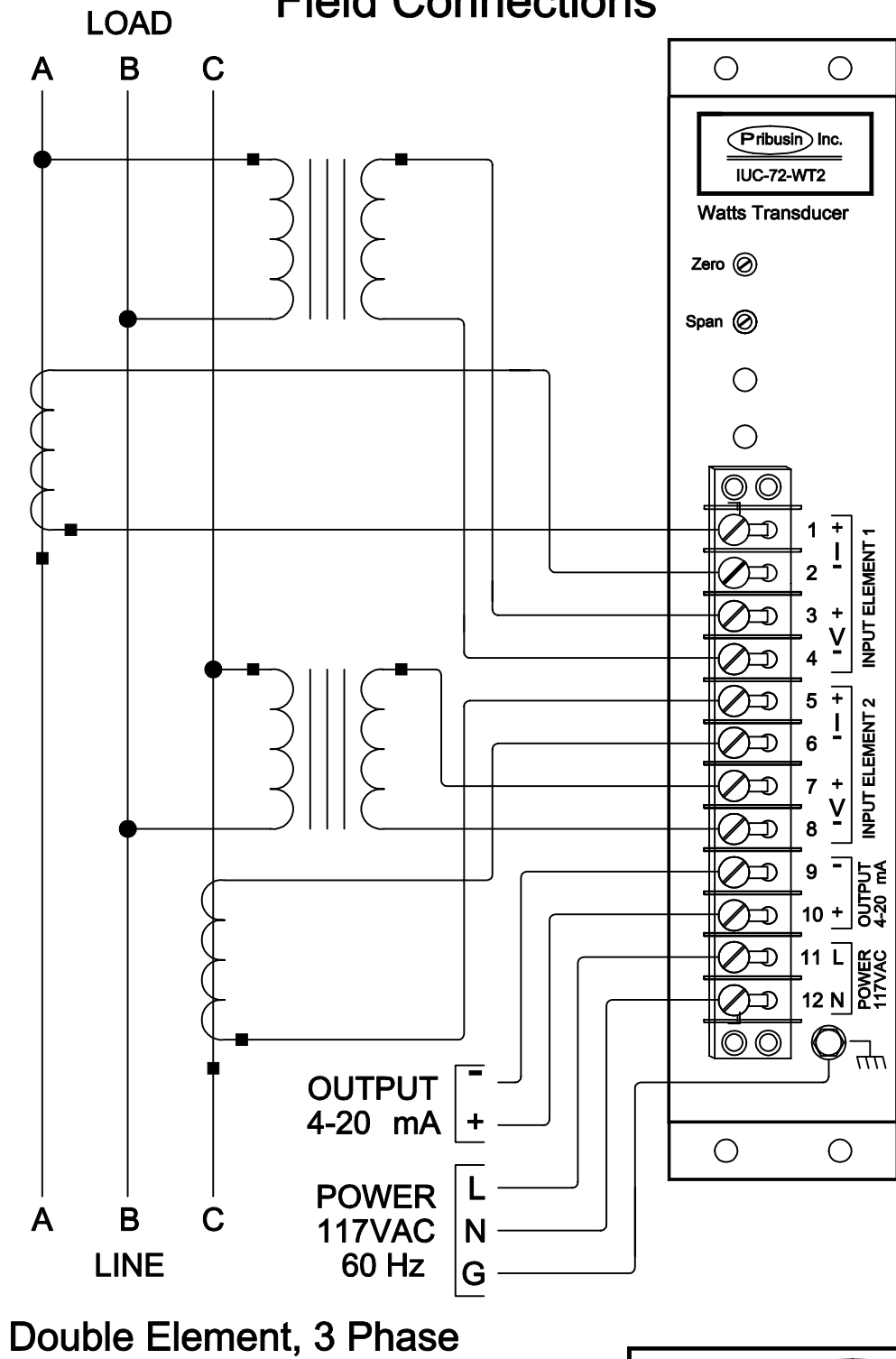
Pribusin Inc. ©

CHKD: DATE: Jan. 05/95 DRN: KS

Model: IUC-72-WT2 (117VAC Power)
 Double Element Watts Transducer
 Enclosure Drawing

DWG. NO. : 105490 REV. A

Field Connections



Pribusin Inc. ©		
CHKD:	DATE: Jan. 05/95	DRN: KS
Model: IUC-72-WT2 (117VAC Power) Double Element Watts Transducer Field Connections		
DWG. NO.:	105491	REV. A