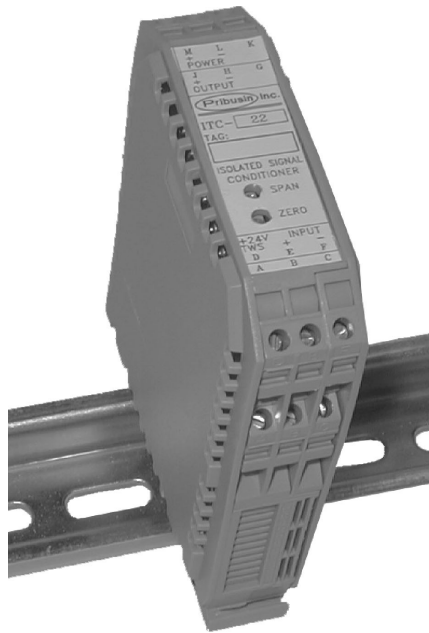


**Pribusin Inc.**

Manufacturers of Process  
Controls and Instrumentation

**Model: ITC-7X-TXX**

**Isolated Terminal Thermocouple Conditioner**



### Standard features:

- High Input-Output-Power Isolation (1500VAC Test)
- Small Size - Fits on Terminal Block Rail
- Industry Standard Outputs (see back)
- Standard Ranges for Type J,K,E,T,S,R
- Special Ranges and other Types available
- Cold Junction Compensated
- Standard Upscale Protection on all Units
- High Output Drive (1000 Ohms for 4-20 mA)
- Power: 24 VDC, 80 mA
- High Noise Rejection
- CSA and NRTL Approved (LR 51078)

### Function:

The ITC-7X-TXX provides high isolation from Input to Output to Power in a small, easy to install package. The universal DIN rail mount often makes it possible to install the ITC-7X-TXX right next to other instruments that it is to be wired to. The many different Thermocouple types and ranges as well as output configurations allow it to be used in a great variety of temperature measurement applications.

The high output drive (1000 Ohms @ 4-20 mA) allows the ITC-7X-TXX to drive several other instruments directly from its output.

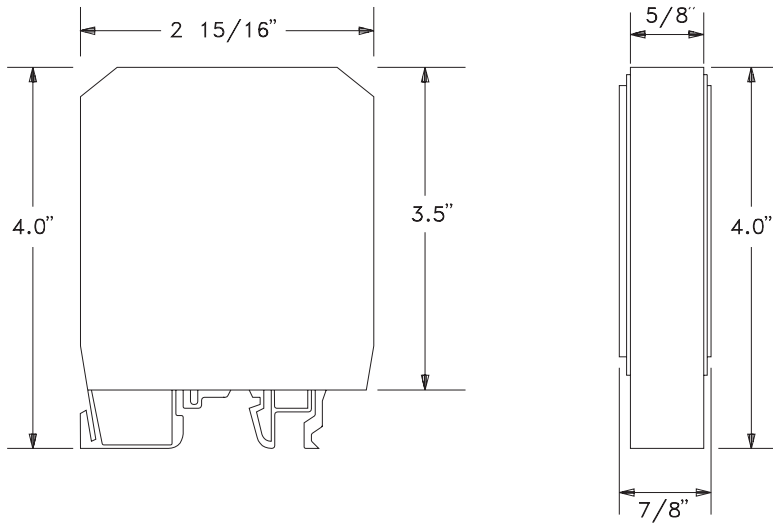
Upscale protection is standard on all units unless downscale protection is specified.

### Specifications:

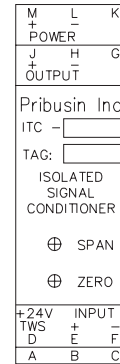
Isolation: 1500 VAC Input to Output to Power (Test)  
Power: 24 VDC (19-29VDC) @ 80 mA  
Accuracy/Linearity: +/-0.2% max., +/- 0.1% typ.  
(Linear with Material not Temperature)  
Loop Resistance  
Change Effects: -0.03% per 100 Ohms change  
(4-20 mA only) calibrated at 250 ohms  
Common Mode Rej.: at 60 Hz = 120 dB  
Response Time: 100 msec to 63% of final value  
500 msec to 99% of final value  
T/C Compensation: Cold Junction Compensation  
Temperature Effects: +/- 0.025% per Deg.C.  
Span Drift: +/- 0.025% per Deg.C.  
Zero Drift: 1 uV per mV offset per Deg.C. OR  
1 uV per Deg.C., whichever is greater  
Drift at 25 Deg. C.: 24 Hours: +/- 0.1%  
30 Days: +/-0.2%  
Operating Temperature:-40 Deg. C. to + 50 Deg. C.  
Coupling Capacitance: Input-Output-Power = 20 pF  
Input Impedance: 1 Meg Ohm min.

# ITC-7X-TXX

## Dimensions:

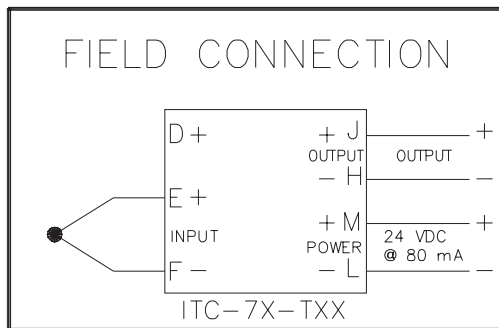


## Calibration:



Calibration is usually not necessary, but two multi-turn pots allow for fine adjustments.

## Connection:



## Model Designation:

ITC-7X-TXX

Output

Example: A Thermocouple Transmitter for type 'K' for 0-500F and 4-20 mA Output is : ITC-72-TK2

2: 4-20 mA (1000 Ohm Drive)  
5: 1-5 VDC (Zout=250 Ohm)  
6: 0-10 VDC (Zout=500 Ohm)  
7: Special Output

Range	J	K	E	T	R	S
0 to 300F -18 to 150C	TJ1		TE1	TT1		
0 to 400F -18 to 204C	TJ2	TK1	TE2	TT2		
0 to 500F -18 to 260C	TJ3	TK2	TE3	TT3		
0 to 750F -18 to 400C	TJ4	TK3	TE4		TR1	TS1
0 to 1000F -18 to 538C	TJ5	TK4			TR2	TS2
0 to 1500F -18 to 816C		TK5			TR3	TS3
0 to 2000F -18 to 1093C		TK6			TR4	TS4
0 to 3200F -18 to 1760C					TR5	TS5
-350 to 1100F -200 to 600C	TJ6	TK7	TE5			

Manufactured By:

**Pribusin Inc.**

www.pribusin.com  
info@pribusin.com

### USA:

Pribusin Inc.  
4319 E. Apple Ave.  
Muskegon, MI 49442  
Ph: (231) 788-2900  
Fx: (231) 788-2929



### CANADA:

Pribusin Inc.  
101 Freshway Dr. Unit 57  
Concord, Ontario, L4K 1R9  
Ph: (905) 660-5336  
Fx: (905) 660-4068