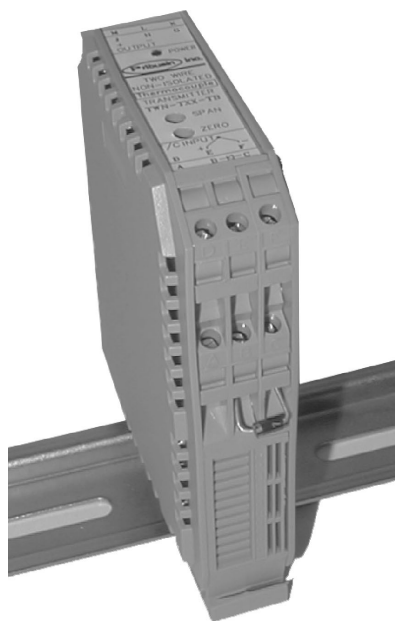


Pribusin Inc.

Manufacturers of Process
Controls and Instrumentation

Model: TWI-22-TB (1992)

Loop Powered Isolator



Standard features:

- High Input-Output-Power Isolation (1500VAC Test)
- Small Size - Fits on Terminal Block Rail
- Industry Standard 4-20 mA Input and Output
- Powered From Input Loop
- Requires No Calibration
- Very Efficient (only 1.5V Loop Loss)
- High Output Drive (up to 700 Ohms)
- High Noise Rejection
- CSA and NRTL Approved (LR 51078)

Function:

The TWI-22-TB (1992) is a loop powered current isolator which can be used in applications where loop isolation is required but power is not available and/or space is limited. The isolation is achieved via an isolation transformer. Every isolator is tested at 1500 VAC to ensure that the dielectric strength is sufficient.

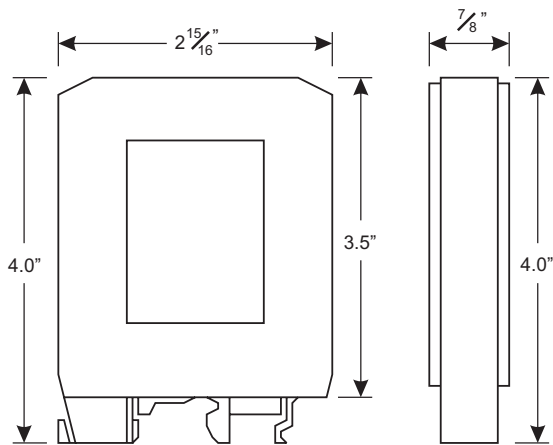
The output is capable of driving a load of 700 Ohms while only an additional 1.5 Volts are dropped across the input. For example, an output loop load of 250 Ohms would result in a total input impedance of: $R(\text{load}) + R(\text{isolator})$, where $R(\text{isolator}) = 75 \text{ Ohms}$

Specifications:

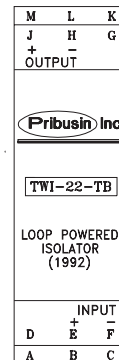
- Isolation: 1500 VAC Input-Output-Chassis (Test)
- Loop Loss: 1.5 VDC
- Input: 4-20 mA
- Output: 4-20 mA
- Accuracy/Linearity: +/-0.1% max., +/-0.05% typ.
- Response Time: 10 msec to 63% of final value
40 msec to 99% of final value
- Temperature Effects: +/-0.5% max., +/-0.2% typ.
for 40 Deg.C. change
- Drift at 25 Deg.C.:
 - 24 Hours +/-0.05% max., +/-0.03% typ.
 - 30 Days +/-0.1% max., +/-0.05% typ.
- Operating Temperature: -40 Deg. C. to + 50 Deg. C.

TWI-22-TB (1992)

Dimensions:

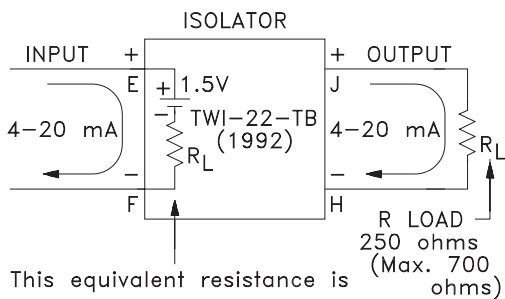


Connection:



No Calibration is required on the TWI-22-TB (1992)

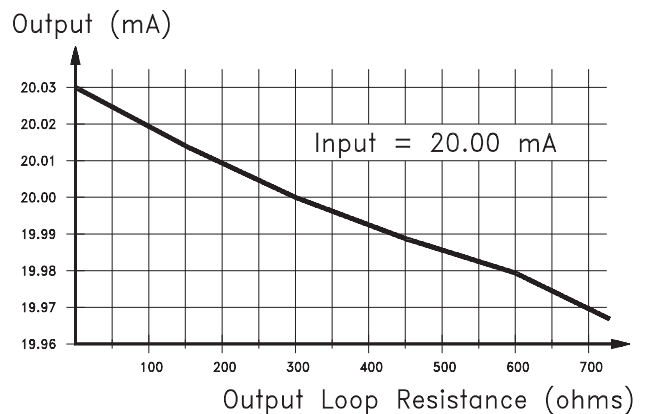
Connection:



This equivalent resistance is $R_L + 75 = 325$ ohms when the Load is 250 ohms

$$R = \frac{E}{I} = \frac{1.5 \text{ V}}{20 \text{ mA}} = 75 \text{ ohms @ } 20 \text{ mA}$$

Loop Resistance Effects:



Manufactured By:

Pribusin Inc.

www.pribusin.com
info@pribusin.com

USA:

Pribusin Inc.
4319 E. Apple Ave.
Muskegon, MI 49442
Ph: (231) 788-2900
Fx: (231) 788-2929



CANADA:

Pribusin Inc.
101 Freshway Dr. Unit 57
Concord, Ontario, L4K 1R9
Ph: (905) 660-5336
Fx: (905) 660-4068