



Standard Features:

All Standard T/C Input Types

Many Standard Temperature Ranges (Special Ranges Available)

2 Form 'C' Relay Contact Outputs

Each Relay Contact has Individual Setpoint, Deadband and Delay Adjustment.

Easy Field Calibration (Typ. calibration time < 2 min. using handheld meter only)

Microprocessor Controlled for High Accuracy

Power: 117 VAC 50/60 Hz (Optional 24 VDC)

High Noise Rejection

CSA and NRTL Approved (LR 51078)

Function:

The UA-7D-TXX is a microprocessor controlled Thermocouple alarm trip. It is easily field configurable to operate in a large number of different modes. Each relay contact output is individually configurable to the following modes of operation: High/Low Trip, Normally Energized / De-energized. Additionally, both relays operate from the same input to give two levels of alarm for a single input.

A delay feature allows a 0-60 sec. adjustable ON delay to be added to the trip function in order to screen out intermittent and erroneous alarms. If the delay function is activated, the input must be greater than the setpoint for the time specified by the delay before the relay will activate. There is also a combined ON and OFF delay function which, in addition to delaying the relay 'turn-on' time, delays the relay 'turn-off' time.

Calibration:

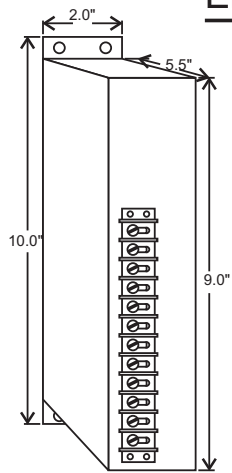
Each relay contact has three potentiometers that are used to adjust the setpoint, deadband and delay settings. The setpoint and deadband can be set anywhere from 0-100% of the input range. The delay is adjustable from 0-60 sec. A test point next to each potentiometer shows a voltage of 0-5 VDC for a setting of 0-100%.

Specifications:

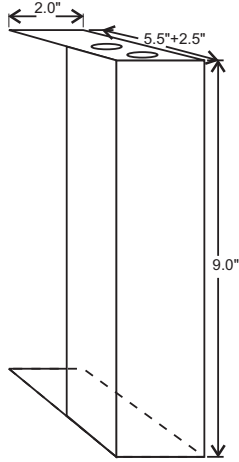
Accuracy/Linearity: +/- 0.3% max., +/- 0.1% typ.
Operating Temperature: -40 Deg.C. to +50 Deg.C.
Temperature Effects: +/-0.5% max., +/-0.2% typ.
(for 40 Deg.C. change)
Contact Rating: 10A 1/8Hp @ 125VAC
6A 1/8Hp @ 277VAC

UA-7D-TXX

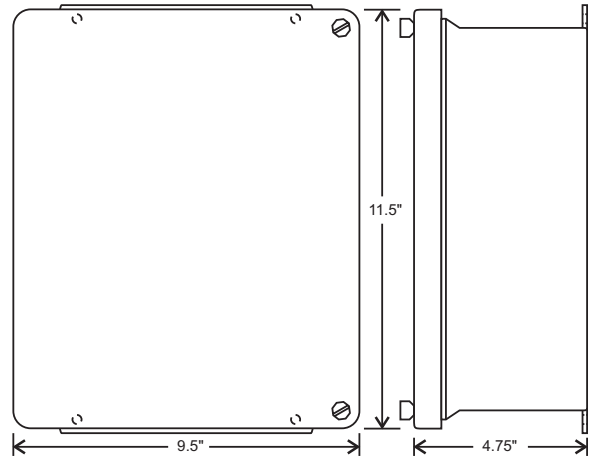
Enclosures & Dimensions:



Standard Metal Enclosure

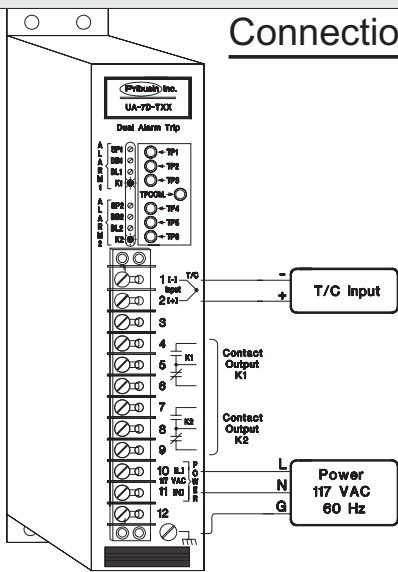


Conduit Cover Option for Metal Enclosure



NEMA 4X Option

Connection:



Model Designation:

Example: A Dual Alarm Trip for a type 'K' thermocouple input over a range of 0-500 F is designated by: UA-7D-TK2

Range	J	K	E	T	R	S
0 to 300F -18 to 150C	TJ1		TE1	TT1		
0 to 400F -18 to 204C	TJ2	TK1	TE2	TT2		
0 to 500F -18 to 260C	TJ3	TK2	TE3	TT3		
0 to 750F -18 to 400C	TJ4	TK3	TE4		TR1	TS1
0 to 1000F -18 to 538C	TJ5	TK4			TR2	TS2
0 to 1500F -18 to 816C		TK5			TR3	TS3
0 to 2000F -18 to 1093C		TK6			TR4	TS4
0 to 3200F -18 to 1760C					TR5	TS5
-350 to 1100F -200 to 600C	TJ6	TK7	TE5			

Options: (Add to end of Model Number)

- A - 24 VDC Prime Power
- B - 240 VAC Prime Power (not CSA approved)
- T - 200 mA Two Wire Supply (24 VDC unreg.)
- C - Conduit Cover for Metal Enclosure (above)
- N - NEMA 4X enclosure (see above)

Manufactured By:

Pribusin Inc.

www.pribusin.com
info@pribusin.com

USA:

Pribusin Inc.
4319 E. Apple Ave.
Muskegon, MI 49442
Ph: (231) 788-2900
Fx: (231) 788-2929



CANADA:

Pribusin Inc.
101 Freshway Dr. Unit 57
Concord, Ontario, L4K 1R9
Ph: (905) 660-5336
Fx: (905) 660-4068